



CERTIFICATE OF ANALYSIS

Product Name rCEA

Catalog Number 3000

Lot Number 9339P-D1

General Information CEA is a fully glycosylated, soluble recombinant protein derived from the ectodomain coding sequence of the human carcinoembryonic antigen gene. The protein is produced in insect cells using the baculovirus expression system and purified from the culture media by low pressure, low temperature chromatography to preserve its biological activity and three-dimensional structure.

Concentration 970 ug/ml

Buffer 10mM Sodium Phosphate, pH7
150 mM NaCl

MW 120,000 on SDS/PAGE

Purity >90%

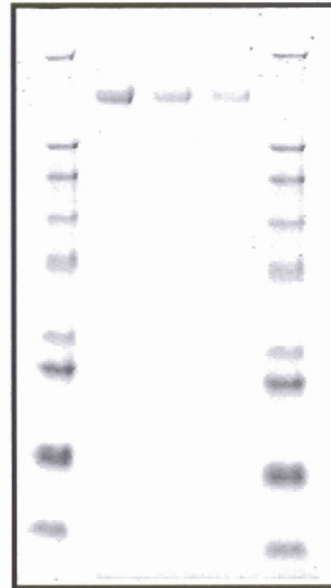
Pyrogenicity <5 EU/ml

Sterility No bacterial or fungal contamination.

Stability 2 years from August 2003

Storage 2-8°C

Special Handling Avoid Freezing. Keep sterile.



Approved

[Handwritten Signature]

Date

9/30/04

Caution: These products are derived only for use in laboratory animals or in vitro tests. They may not be used in humans, clinical diagnostic procedures or blood bank screening and any such use is unlawful.

This product was made using ExpresSF+® cells, covered by US patent number 6,103,526 and corresponding foreign patent applications.